



Jobson Cup Youth Regatta 2021

Sailing Instructions

Great Harbor Yacht Club

1 RULES

1.1 The event is governed by the *rules* as defined in *The Racing Rules of Sailing*.

2 NOTICES TO COMPETITORS

Notices to competitors will be posted on the Official Notice Board located at GHYC.

3 CHANGES IN THE SAILING INSTRUCTIONS

Any change to the Sailing Instructions will be posted immediately after the competitors meeting on July 28, 2021

4 SIGNALS MADE ASHORE

4.1 Signals made ashore will be displayed from the yardarm of the flagpole at GHYC.

4.2 When flag AP is displayed ashore, '1 minute' is replaced with 'not less than 60 minutes' in the race signal AP.

5 BOATS

5.1 Optimist Prams will need to be provided by each sailor. Boats may be acquired through their yacht club.

5.2 All competitors are required to display their respective class color on the aft portion of the boom. Champ Fleet will be denoted by **RED** yarn and Green fleet by **GREEN** yarn

5.3 To keep the boats as equal as possible, the following limitations shall apply:

- (a) No Modifications: The boats shall be sailed as provided by Vanguard. Modifying the boats, altering, removing or adding any equipment or rigging, other than as specifically provided for herein is strictly prohibited.
- (b) Electronics: Use of electronic equipment is prohibited while racing. This includes GPS or other navigation equipment, cell phones, wind or speed instruments, etc.
- (c) Standing Rigging: No adjustments may be made to the standing rigging (including stays, shrouds and spars) at any time.
- (d) Running Rigging: Running rigging shall be used as supplied and intended per the design of the rigging plan of the boats, and adjusted to within normal tolerances. No additional running rigging, or additional purchase to existing rigging, may be added or used, except to the extent required for emergency repairs while sailing.
- (e) Supplied Equipment: Equipment supplied with the boats, including all lines, spars, tiller extensions and miscellaneous equipment shall remain aboard at all times, unless removed for repair or replacement.
- (f) Permitted Supplemental Equipment & Modifications: Crews may supplement or modify the boats only as follows:
 - (1) Wind indicators (telltales) may be tied or taped anywhere on the boats.
 - (2) Chafing tape may be applied above the waterline.
 - (3) Lines may be marked with removable, non-residue tape.
 - (4) Crews may use their own personal flotation devices and provide other personal or safety gear.
 - (5) No marks should be made on the boats with pencils, markers or grease pencils, except that they shall be completely washable, leaving no trace of their use. Competitors shall be responsible for the removal of any markings left on the boats.

6 SCHEDULE

6.1 A Competitors Meeting will be held at 1230 on July 28th, in the Great Harbor Yacht Club. The location of the Racing Area and time of the warning signal for the first race will be announced at the meeting.



- 6.2 Unless otherwise announced, the warning signal for the first race will be at 1330.
- 6.3 No warning signal will be made after 1530.

7 REGATTA FORMAT

- 7.1 One race per fleet will constitute a regatta.

8 RACING AREAS

Attachment 1 shows the racing area in Nantucket Harbor.

9 COURSE

The diagram in Attachment 2 shows the course, including approximate angles between legs, the order in which marks are to be passed, and the side on which each mark is to be left.

10 MARKS

All marks will be orange inflatable marks or orange balls.

11 START

- 11.1 The starting line will be between a staff displaying an orange flag on the Committee boat and the course side of a nearby mark.
- 11.2 The race will be started using a three minute dinghy start.

12 RECALLS

- 12.1 Individual recalls will be made in accordance with rule Q6. In addition, flag **X** shall be displayed with one sound for up to four minutes following the start. The Race Committee will attempt to hail the boat's sail number. However, the failure of the race committee to hail, or of any boat to hear the hail and the order of such hails shall not be grounds for granting redress. This changes RRS 62.1(a).
- 12.2 Multiple sound signals and the hail of the words "general recall" will signal a general recall. No visual signal will be given.

13 FINISH

The finish line will be between a staff displaying an orange flag on the Finish/Start boat and a nearby mark.

14 TIME LIMIT

The time limit shall be 20 minutes for the first boat to finish. Boats failing to finish within 10 minutes after the first boat sails the course and finishes will be scored DNF. This changes rules 35 and D3.1(a)

15 BREAKDOWNS

A boat suffering a breakdown shall move away from other competitors and signal the race committee boat immediately. A breakdown claim must be made immediately. This supplements rule D5, Breakdowns.

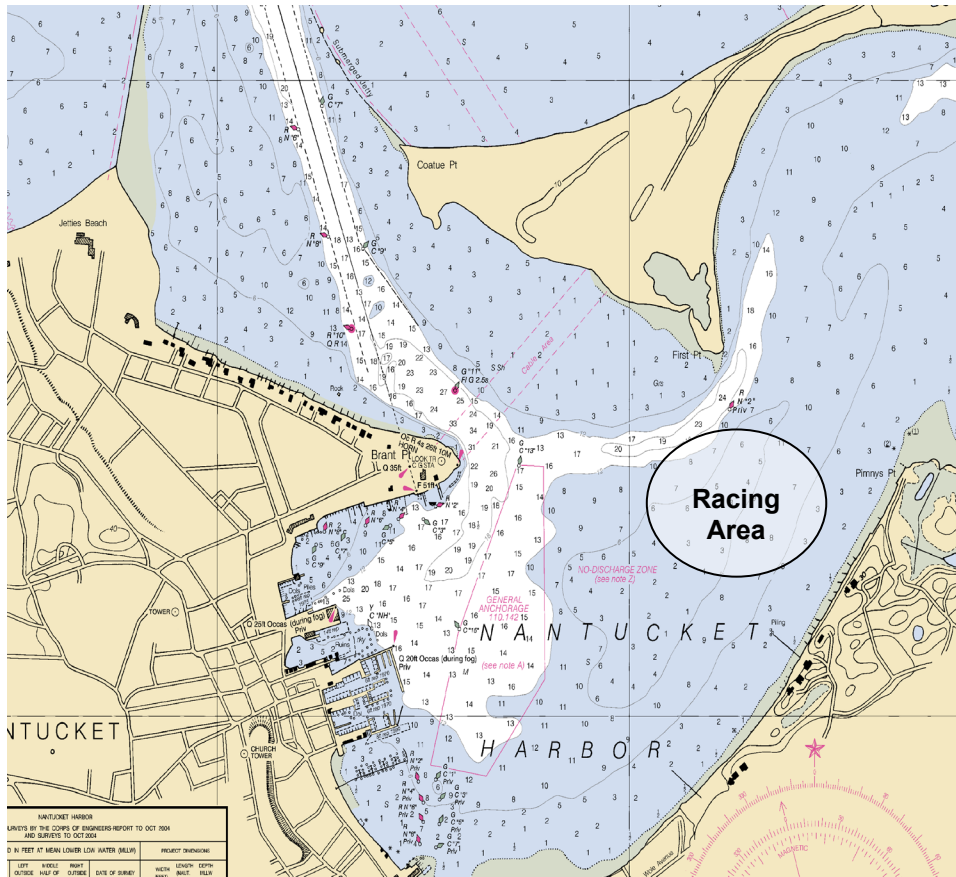
16 DISCLAIMER OF LIABILITY

Sailing is an activity that has an inherent risk of damage and injury. Competitors in this regatta are participating entirely at their own risk. See Rule 4, Decision to Race. The race organizers (GHYC) will not be responsible for damage to any boat or other property or the injury to any person sustained as a result of participation in this regatta. By participating in this regatta, each competitor (owners, skippers and crews) agrees to release the race organizers from any and all liability associated with such competitor's participation in this regatta to the fullest extent permitted by law.

17 PRIZES

Prizes will be awarded to the top three sailors of each fleet.

Attachment 1 – Racing Area



Attachment 2 -- Course

